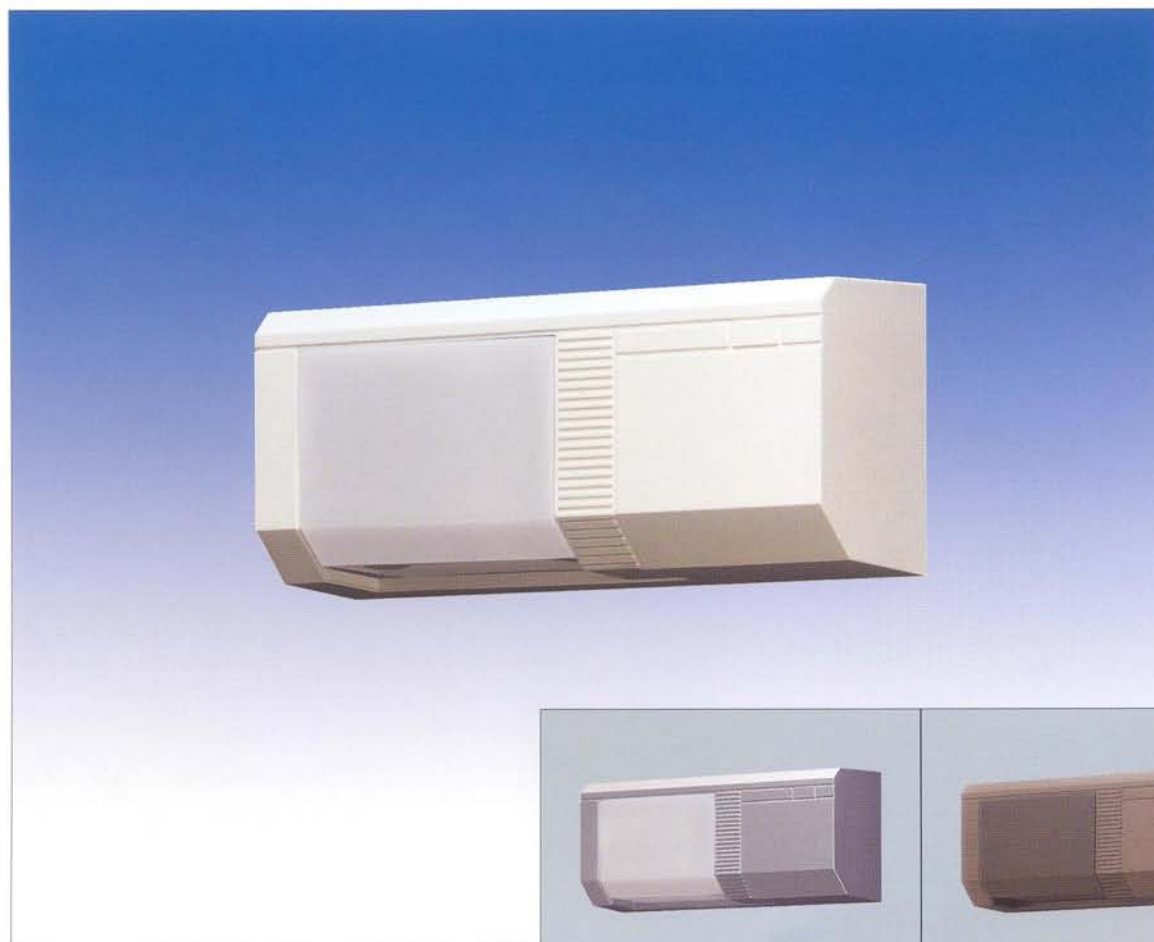


# PASSIVE INFRARED SENSOR



**PS-520E (White/Silver/Bronze)**



Silver

Bronze

## Request-to-Exit Sensor

Designed for applications involving coverage at the threshold of a doorway, the PULNiX Passive Infrared Sensor detects the differential between a human body and the floor. It features several field selectable options and adjustments to make it the ideal choice for access control applications, door strike release, alarm system shunting and automatic door operation.

### TOTALLY STABLE, TOTALLY RELIABLE

Dual pyroelectric for increased stability against external light. Special circuitry provides high immunity to RFI and other electrical noise.

### ADJUSTABLE COVERAGE AREA

Adjust from straight downward 'blanket' covering the door to angles of 35° in front of door.

### ADJUSTABLE SENSITIVITY

Increase or decrease to suit your site needs.

### SINGLE OR DOUBLE DOOR COVERAGE

The two position mirror provides coverage of single and double doors.

### ADJUSTABLE RELAY TIMER

0.25 to 60 second adjustment for relay hold time.

### TWO RELAY OUTPUTS

Both normally open/normally closed.

### HEAVY DUTY RELAY OUTPUT

Relays drive up to 1 amp of current for controlling door strikes and magnetic locks.

### FAIL SAFE - FAIL SECURE

Selectable by DIP Switch.

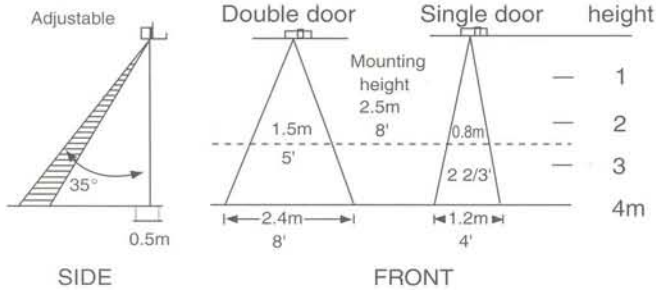
### COMPACT DESIGN IN BRONZE, WHITE OR SILVER

# PASSIVE INFRARED SENSOR

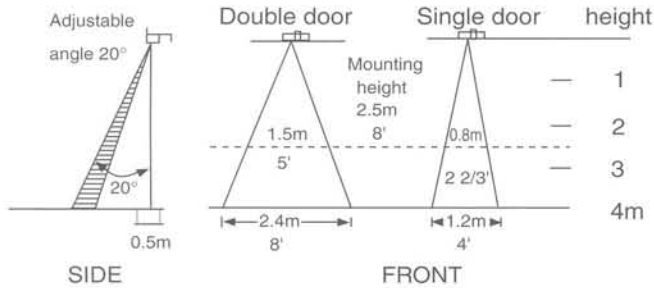
## DETECTION AREA

The PS-520E detects the temperature differential between a human body and the floor. The unit can be precisely set for the detection area desired.

Wall or frame mount

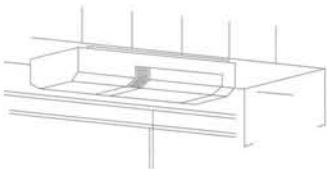


Ceiling mount

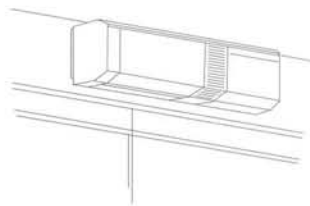


## INSTALLATION

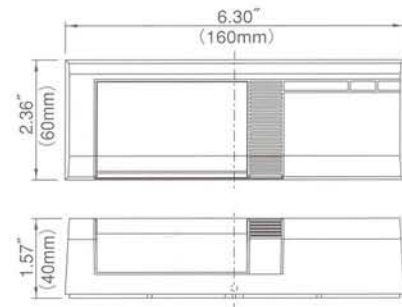
Overhead mount



Wall or frame mount



## EXTERNAL DIMENSIONS (Unit:mm)



## SPECIFICATIONS

MODEL	PS-520E (W)	PS-520E (S)	PS-520E (B)	
DETECTION SYSTEM	Passive Infrared			
DETECTION AREA	MOUNTING HEIGHT	13' (4m) Max		
	PATTERN	Single (Door) or Double (Door) <input type="checkbox"/> Selectable		
	ADJUSTMENT RANGE	wall mount: vertically 35° overhead mount: vertically 20°		
	SENSITIVITY	Adjustable		
POWER SUPPLY	12 to 24VDC (Non polarity) or 12 to 24VAC (50Hz / 60Hz) (When operated at AC20 to 24V connect attached resistor.)			
POWER CONSUMPTION	40mA or less / DC	70mA or less / AC		
OUTPUT	Dry Contact relay 2°C: One shot Operation Hold time: Adjustable approx. 0.25sec to 60sec Contact capacity: 30V (DC) 1A or less 125V (AC) 0.6A or less Selectable relay operation: Fail-safe, Fail-secure			
LED	Green Operation: synchronous dry contact relay (LED disabled)			
WIRING CONNECTION	Terminals			
AMBIENT TEMP RANGE	+14°F to +122°F (-10°C to +50°C) without condensation			
MOUNTING POSITION	Wall, ceiling on or under frame (indoor)			
WEIGHT	5.95 oz (170g)			
APPEARANCE	BODY (ABS RESIN)	White	Silver	Bronze
	WINDOW (PE RESIN)	White	White	Grey
ACCESSORIES	<ul style="list-style-type: none"> <li>Tapping Screw : 2 pcs.</li> <li>Cover Lock Screw : 1 piece.</li> <li>Resistor : 1 piece (connect when operated at AC20 to 24V) (82Ω , 3 W)</li> </ul>			

LEAF04-02P17-1

# PULNiX

### In Japan

**Takenaka Engineering Co., Ltd**  
83-1, Gojo-sotokan,  
Higashino, Yamashina-ku,  
Kyoto 607-8156, Japan  
Tel : 81-75-501-6651  
Fax: 81-75-593-3816  
<http://www.takex-eng.co.jp/>

### In the U.S.

**Pulnix Sensors Inc.**  
230 E. Caribbean Drive  
Sunnyvale,  
CA 94089, U.S.A.  
Tel : 408-747-0100  
Fax: 408-734-1100  
<http://www.pulnixsensors.com/>

### In Australia

**Pulnix Sensors Inc.**  
Unit 16, 35 Garden Road,  
Clayton, Victoria 3168,  
Australia  
Tel : 03-9546-0533  
Fax: 03-9547-9450  
<http://www.pulnixsensors.com.au/>

### In the U.K.

**Pulnix Europe Ltd.**  
Pulnix House, Aviary Court,  
Wade Road, Basingstoke,  
Hampshire. RG24 8PE, U.K.  
Tel : 01256-475555  
Fax: 01256-466268  
<http://www.pulnix.co.uk/>